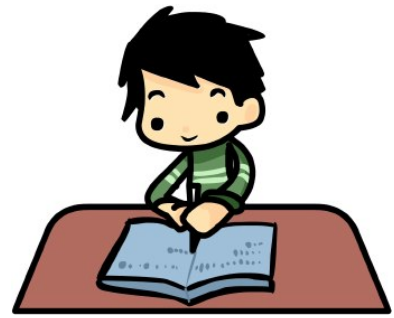


# Reception Curriculum

## Coverage

### Spring Term



#### Communication and Language

- Role Playing
- Listening and responding to conversations
- Listening and joining in with stories and rhymes
- Focusing Attention
- Following instructions
- Developing new vocabulary



#### Literacy

- Guided reading groups
- Enjoying stories and information books
- Listening to stories through different mediums e.g. on smart board or on a CD player
- Writing words and sentences using 'sound talking'
- Focusing more on writing sentences and sentence structure e.g. using capital letters, fingers space and full stops
- Continue our daily 'Letters and Sounds' sessions
- Reinforce all letter sounds learnt so far and introducing next set of letters
- Learning to read and write all tricky words learnt so far and new tricky words
- Orally blending and segmenting words
- Read a sentence to make sure its makes sense
- Understanding and giving meaning to what is being read

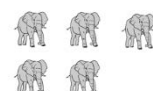
#### Physical Development

- Listening to instructions
- Using our Outdoor Environment
- Threading, play dough and scissor control
- Continue writing our names
- Practising correct letter formation
- Developing control for pencils, paintbrushes and cutting
- Using simple tools
- Forming letters correctly
- Observe effect of exercise on body and a healthy lifestyle
- Moving safely and experimenting with different ways of moving

#### Mathematical Development

- Number recognition to 20
- Counting objects accurately to 20 and beyond
- Matching correct numeral to groups of objects to 20
- Finding one more/one less
- Ordering numbers to 20
- Naming and describing features of 2D and 3D shapes.
- Use language of size, length, height, weight and capacity.
- Adding and Taking away
- Number formation
- Counting in 2's, 5's and 10's
- Doubling and halving

$$3 + 2 = 5$$



## Personal, Social & Emotional

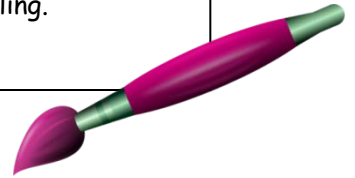
- To talk through and solve problems and resolve conflicts with other children
- Self confidence
- What am I good at?
- Talking about our home and community and special events in our lives
- Expressing needs and feeling appropriately
- Being sensitive to needs of others

## Understanding the World

- Focused software games, in particular letters and sounds and number games
- Using the Listening station and Beebots independently
- Talking about our families and other families
- Learning about living things and the environment
- Looking at similarities and differences and how things change. e.g. life cycles

## Expressive Arts and Design

- Introduce Artist of the week
- Constructing in our workshop.
- Role play
- Developing our oral story telling.



## Dates for your diary:

- **Learning Journey Drop-in** - Monday 16<sup>th</sup> January - 9:05-9.35/2.50-3:20
- **Red day** - Monday 30<sup>th</sup> January (wear something red to celebrate Chinese New Year. (details to follow)
- **Parents Evening** - Thursday 30<sup>th</sup> March (details to follow)

## Remember

***Please send in P.E kits on the first day back after every half term and ensure P.E. kits, coats, hats, gloves and scarves are labeled with your child's name.***

**Please fill your child's water bottle up and send into school everyday.**

## PLEASE NOTE

### SCHOOL STARTS AT 9AM PROMPT.

The children should be in school and sat down by 9AM ready to start learning. The door will be closed at 9AM and any child arriving late will need to come in at the office entrance in order to be registered. Staff will be teaching at 9AM and will not be able to open the doors.

Thank you for your support.